



We make caring for animals easier.

Hoofcare Guide for Dairy



Hoofcare Guide

Its time to get the girls in and check their feet and do some trimming and balancing in preparation for a new milking season. Our Hoofcare Guide is designed to help you prevent and manage hoof issues.

Proper hoof care is crucial for maintaining healthy and productive dairy cows. By implementing the following best practices, you can significantly reduce the risk of lameness and start next lactation off on the right foot.

Early Intervention

Situation - minor sole bruising, mild foot rot, small hoof cracks or chips
Duration of wear: 7-21 days
Product solution: Walkease

Lame Cow

Situation - moderate foot rot, moderate ulcers (sole, toe or heel), hoof cracks, abscesses, white line disease (with hoof wall separation)
Duration of wear: 21-28 days
Product solution: Bovi-Bond & Softwood/Hardwood or Rubber Block

Severe Conditions

Situation - Chronic laminitis, severe foot rot, deep or chronic ulcers, white line disease (with significant hoof wall separation), deep-seated abscesses, severe hoof cracks, inflamed coffin bone, claw deformities, thin soles
Duration of wear: 28-42 days
Product solution: Hoofers/Cowslips

Lameness rating

NZ Grade* (DNZ)	NZ/AUS Rating	Cure	Product List
0 No Lameness	Walks evenly. No action required.	Race care, matting in shed, monitoring and recording, AI maintained and monitoring, cleanliness and care of all hooves (trimming and maintenance), foot bath	Hoofmats, Hoof Knives, Wrist Guards, Test Pliers, Vet Rope
1 Walks unevenly	Minor action required. Record and keep an eye on her -some cows normally walk unevenly.	Hoof knives, care of lesions (Repiderma) monitoring and recording, AI maintained and monitoring, restraint of limb, soft block or bandaging (depending on cause and need)	Hoofmats, Hoof Knives, Wrist Guards, Test Pliers, Walkease, Softwood Block, Vet Rope, Repiderma, bandaging
2 Mildly Lame Cow	Lame. Action required. This cow is lame and needs to be reported, drafted and examined and treated within 48 hours.	Hoof Knives, care of lesions (Repiderma) monitoring and recording, AI maintenance and monitoring, restraint of limb and or whole cow (Crush or tipper), hard wood or plastic block, bandaging	Hoofmat, Hoof Knives, Wrist protectors, hoof tester, plier, soft or hard wood block, Vet Rope, Vet race belly strap, Repiderma, bandaging
3 Very Lame Cow	Very lame. Urgent action required. This cow is very lame and needs urgent attention. Draft and examine as soon as possible within 24 hours. Will require treatment	Hoof Knives, care of lesions, antibiotic treatment, cleaning & monitoring/recording, restraint of whole cow (Crush or tipper), Shoe for long term use, bandaging Vet attention - worse case amputation or cull cow	Hoofmat, Hoof Knives, Wrist Guards, Test Pliers, Bandaging, Vet Race Belly Strap, Hoofers, Cowslips (vet only)

Lameness and Hoof solutions

Hoof Health	Walkease	Wood Block	Rubber Block	Hoofers	Cohesive Bandage	Hoofmat / Footbath
Thin Sole	X					X
Foot Rot	X					X
Heel Horn Erosion	X					X
Early Digital Dermatitis	X	X			X	X
Early Sole Hemorrhage	X	X				
Toe Ulcer	X	X			X	
Digital Dermatitis		X		X	X	X
White Line		X	X	X	X	
Fissure		X	X	X	X	
Sole Hemorrhage			X	X	X	
Interdigital Hyperplasia					X	X
Digital Sepsis					X	

What to use and when

Product	< STAGE >			
	Prevention	Early-Intervention	Lameness	Severe Lameness
Days of block wear required		7-20 days	21-28 days	29+ days
Hoofmat	X			
Hoof Testers	X	X	X	X
Hoof Knife	X	X	X	X
Hoof Trimmer	X	X	X	X
Cohesive Bandage		X	X	X
Walkease		X		
Hardwood Block			X	
Rubber Block			X	
Bovi-Bond Glue			X	
Hoofers				X
Cowslips				X
Stage		At first sign of suspected lameness (gait is off, short stride, arched back, head bobbing)	At signs of obvious lameness	Ongoing lameness where a block needs to be worn for an extended period.

Steps of Hoofcare



1. Disinfect

Establish a hoof disinfection routine to prevent hoof infections. Regular disinfection minimises harmful bacteria and fungi, preventing transmission of ailments. Use solution in our cost efficient and effective HoofMats or footbaths to enhance resilience, and resist disease. Prioritising hoof care at dry off sets a strong baseline for cow health, reducing costs, and improving herd longevity and productivity.



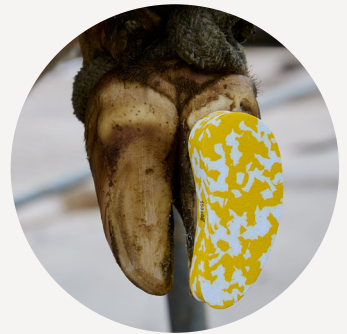
2. Inspect

Conduct regular hoof inspections to detect early signs of hoof problems. Look for any uneven wear, swelling, redness, heat, lesions, cracks, or abnormalities and pay attention to any discharge, odours, or overgrown or broken hooves. By addressing any issues, you can provide timely treatment, reduce the risk of complications, and ensure a smoother transition into lactation. Use of hoof testers to squeeze the hoof to find the source of pain instead of digging everywhere.



3. Trim

A well-balanced and functional trim relieves any bruised areas, identifies underlying problems, and allows ample time for treatment. Consider scheduling a veterinarian or hoof trimmer to trim cow hooves. This trim is particularly important as it addresses any existing hoof issues, relieves any bruising, and prevents further damage. By starting with well-maintained hooves, you lay the groundwork for healthy hoof growth and function during lactation.



4. Block

If any hoof lesions or injuries are identified, consider using blocks as early intervention tool or to remediate severe lameness with long term blocking systems. Blocking helps to relieve pressure and pain on the affected area, allowing for proper healing and preventing additional damage. By using blocks, you provide the necessary support and care for hooves that require extra attention.

Recommended Products



Shoof Hoof Knife

Dairyman's narrow blade (single or double edge). Left and right-hand use in both models for versatile hoof care.



Genia Hoof Knife

French-made precision with high-quality steel. Corrosion-resistant, extra-fine tip, hardwood handle. Left and right hand single edge options.



Aesculap Hoof Knife

High-grade German quality. Stainless steel, sharp edge. Single blades for left/right or double edge. Highly recommended for precision hoof care.



Wrist Guard

Protect your wrists during hoof work with our leather guard. Velcro closure ensures a snug fit

Hoof knives available for left and right hand users, and double edged.



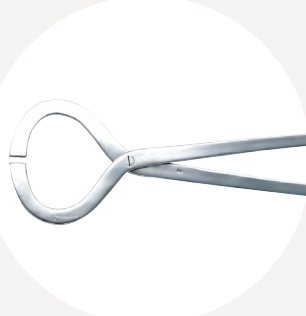
Repiderma

Is an effective protective wound repair solution for all animals. It contains copper and zinc known for their adhesive and protective properties that promote healing and anti-microbial properties.



Hoof Trimmers

An essential tool for maintaining the health of hooves in cattle. Designed with sturdy handles and sharp durable blades.



Hoof Test Pliers

Find the source of cattle hoof pain with ease using our stainless steel hoof test pliers. Use this essential squeeze test tool to eliminate the hassle of finding the problem area.



Claw Checker

A tool that assists the hoof trimmer to achieve the optimal natural hoof shape for dairy cows. Check sole to hoof wall angle, toe length, claw depth, & plane of soles.



Vet Rope

Soft and safe 24mm marine-grade polyester. Limb-friendly, won't cut or chafe. No rot, improves with cold wash. 2.5m or new 2.8m, eye splice included.



Super Dairy Mat

Ideal for large herds. Placed at milking area entrance for liquid hoof remedies. Innovative design pushes liquid into the hoof effectively.



Hoofmat Dairy

Perfect at milking area entrance for liquid hoof remedies. Innovative design pushes liquid into the hoof with the animal's weight effectively.



Vet Race Belly Strap

The Vet Race Belly Strap is designed to provide stability and support to the cow in the vet race during during hoof treatments and minor procedures.



Diamond Sharpener

Perfect for knives, tools, fish hooks, needles, and hoof knives. 6cm diamond shaft with groove, reversible handle. USA-made precision.



Veterinary Book

Cathy Thompson's BVSc guide offers farm-focused veterinary insights with text and vivid photos, providing a realistic view of New Zealand farming.



Foot Bath

Kerbl's modular foot bath links for dual-treatment. Textured floor assures cow confidence. Marked volume wall for easy use. Versatile hoof care solution.



Cohesive Bandages

A self-adhering line of bandaging tape used to secure, protect and compress.

Hoof Cutting Discs

Shoof offers a diverse selection of cutting and grinding disks designed to cater to various skill levels in claw trimming. While these tools can make the job a breeze, it's crucial to handle them with care as they can swiftly trim down claws. It's essential to strike a balance – not too much, not too little. With our range, you can choose from options that delicately touch up or go all-out professional, swiftly removing excess horn and leaving a smooth surface for blocks.

Low

< Skill Level >

High

1

2

3

4

5



1



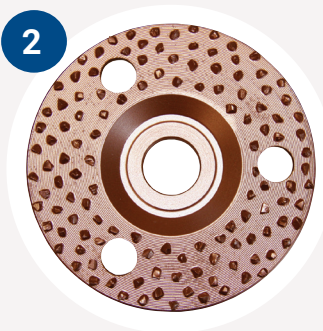
Kerbl Abrasive

Low-cost flexible disc for safer, less aggressive grinding and cleaning of hooves. Diameter of 115mm and centre hole of 25mm

- Flexible disc for less aggressive grinding
- Ideal for hoof block surface preparation
- 115mm diameter, 25mm centre hole

Use this flexible disc for less aggressive grinding back of the hoof and for cleaning affected areas. Safer to use than aggressive cutting discs. Diameter is 115mm with centre hole of 25mm.

2



Kerbl Standard

Standard model hoof cutting disc. Includes rubber vibration damper. Diameter 115mm with 22mm centre hole.

- Remove overgrowth with care & light grinding
- 30-grain grit for highly effective trimming
- Rubber vibration damper reduces vibration
- Excellent value for money, easy to clean

115mm diameter one-sided hoof grinding disc. Includes rubber vibration damper and 22mm centre hole. 30 grain grit has less granulation than Philipsen, but still highly effective. Made of twisted steel dish with carbide assembly. Remove hoof overgrowth with care and light pressure grinding. Disc can be cleaned with wire brush. Excellent value for money.

3



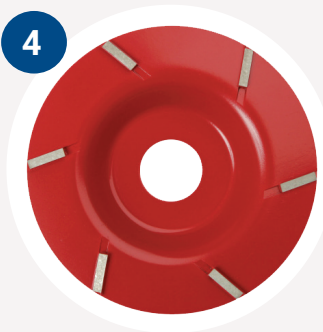
Philipsen

A superior hoof disc due to the tungsten-carbide chip which offers a more aggressive cut without heat build-up. No re-sharpening required. 115mm in diameter.

- For use on hard hoof horn without heat build-up
- Tungsten-carbide chips provide aggressive cutting
- Rubber buffer reduces vibration & user fatigue
- Quality, long lasting disc

Philipsen is the leading brand in hoof discs. This disc incorporates tungsten-carbide chips fixed onto a rigid plate. The tungsten gives a quite aggressive cut, which can be necessary with very hard hoof horn, without building up heat. A rubber buffer on the back reduces vibration when cutting. Holes in the disc also serve to cool it. This quality disc is long lasting. Diameter is 115mm with 22mm centre hole.

4



Kerbl Permanent 6

The Kerbl P6 hoof cutting disc is widely-used in Europe. Developed with professional hoof trimmers. Angled contact surface enables excellent handling for hoof soles and interdigital cavity reducing cutting times by 40%. 105mm diameter with 22mm centre hole.

- Clean & fast cuts with superior disc life
- Safe for use on sole and interdigital space
- Maximum flexibility and affordability
- Made in Germany

The 'P6' is one of Europe's most widely-used hoof cutting discs. Made in Germany. High enough quality for the professional, but at an affordable price for the non-professional. Cutting discs with knives, rather than embedded chips, cut cleaner, faster and cooler, and have longer life. Can be used safely on both the sole, and in the interdigital space. Geometric layout of cutters gives maximum flexibility of use, cutting wherever it is touching the hoof. Should cut up to 1,500 hooves. (Knives are not replaceable.) Disc diameter 105mm with 22mm centre hole.

5



Kerbl Professional

Fast, accurate horn removal with low risk of injury for user or animal. German-made lightweight alloy hoof trimming disc with perforation holes for cooling and clear viewing preventing over trimming. Replacement blades available. Lasts over 3,000 hooves.

- Lightweight alloy disc for less vibration
- Perforation holes for cooling and visibility
- 6 reversible knives for efficient trimming
- Trims over 3,000 hooves per set of blades

Ideal for the professional hoof trimmer. Made in Germany. Disc of lightweight alloy is easier to manage and has less vibration reduces arm fatigue. Perforation holes in the disc give greatest cooling, and enable viewing right through the disc when it is operating at speed. This prevents over-cutting and damaging hoof tissue. The 6 blades run smoothly, coolly, and efficiently removing horn tissue. Blades are reversible for double the life. This disc allows fast and accurate horn removal, with lowest risk of injury to man or animal. The disc should trim more than 3,000 hooves on one set of blades. Diameter 120mm with 22mm centre hole. *Replacement set contains 3 blades and screws.

Why use a Hoofmat?

Hoofmats are a simple, cost-effective prevention aid for hoof infections.

Regular disinfection minimises harmful bacteria and prevents transmission of disease. Prioritising Hoofcare sets a strong baseline for cow health, reducing costs and improving herd productivity.

The design of the mat, combined with weight of the animal, creates an effect that pushes liquid vigorously into the animals foot and interdigital cavity of the hoof.

- Simple solution for prevention of hoofcare ailments
- Minimal waste – cost effective use of solution
- Easy to use – simply place at the entrance to the milking area
- Easy to clean

How to use

We advise using Hoofmats at the ENTRANCE to the milking platform (herringbone dairies will require two). This ensures that the treatment solution has adequate time to work - cows have their feet treated before standing quietly being milked. Hoofmats do not require securing to the floor. Simply place where required and pour on the remedy of your choice before commencement of milking. Top up the Hoofmats after 80-100 cows, or as required during milking.



The hoofmat does more than just bathe animals feet in solution or remedy. The design of the mat, combined with weight of the animal, creates an effect that pushes liquid vigorously into the animals foot and interdigital cavity of the hoof. This is one of the most significant reasons why Hoofmat treatment is so much more effective than usual footbath type treatments. Any remedy used in a footbath can be used more effectively and economically in a Hoofmat. This could be formalin, coppersulphate or a variety of patent remedies. Check with your Vet on their recommendations for remedy.

To familiarise your cows with Hoofmat, so that its sudden appearance at the entrance to the milking area does not startle them, we strongly recommend laying the mats temporarily at the exit of milking, where the cows can see, smell and investigate them without disrupting milking. After passing by, or over, the mats 5 or 6 times, the cows become familiar and are not threatened by them. Mats can be filled with plain water, or with medication, over this period.

When mats are new, they can require a few days of use before they properly absorb their stated capacity. Do not place mats where cows can turn on them as this may reduce the life of the mat. After milking, simply hang your Hoofmat over a rail to drain, and hose off with fresh water.

Checklist

- **Place** - in entry of dairy shed on firm even surface
- **Fill** - with 30 litres of liquid solution (top up as required)
- **Clean** - hang on rail and hose with fresh water
- **Drain** - hang to dry



Walkease (early intervention 7-21 days)

Walkease is a patented early-intervention hoof block repair solution for cattle where the hoof needs to be elevated for a short period of time (7-21 days). Designed & developed in New Zealand by Shoof. Walkease have become world-renowned for its speed and ease of application with its instant glue.



Starter Kit

10x blocks, 10x glue, hoof rasp & full instructions in a resealable plastic box.



Blocks

10 Pack of Walkease blocks only. Glue is not included.



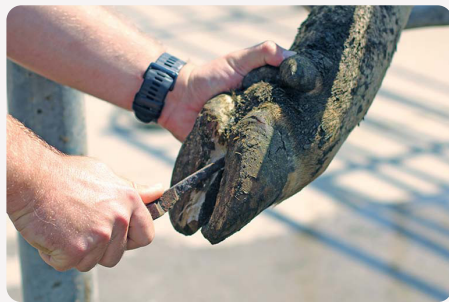
Glue

Renowned for its ease and speed of application. Supplied as 10-pack of 2ml aluminum foil tubes in a dispenser pack for longer life. Each tube is ideal for one block application.



Rasp

Ideal for finishing the hoof, leaving a level, flat and smooth surface for optimal glue and block application.



Treat the injured claw

Treat the injured claw first before moving onto the adjacent claw. Use a grinder or a hoof knife to leave the healthy claw as flat as possible. Ensure all debris is removed and the fresh horn exposed.



Use the Walkease rasp

Always use the Walkease rasp to finish preparing the adjacent hoof surface. Expose fresh horn to provide a clean, flat surface for maximum contact and block adhesion. The rasp must be kept clean and uncontaminated when not in use.



Check the block size

Compare the size and shape of your chosen block before removing its plastic wrapper. Your chosen block must support the hoof wall without any large overlap. Blocks can be trimmed and can be used for left or right hooves – simply turn the block over.



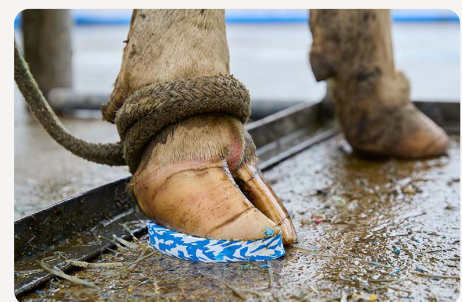
Dispense single-use glue

Always wear gloves when handling Walkease glue. Use the full contents of the 2ml single-use tube to secure the block. Regular, slim lines of glue are better than thick, irregular distribution across the block.



Press the block firmly

Press the block firmly onto the healthy claw, overlapping the hoof wall. After about 10 seconds of steady, even pressure.



Drop the cow's leg

Lower the hoof as glue grips to apply weight on the block, strengthening the bond. In cold conditions, extend standing time before release. Walkease bonds best with applied weight before full glue curing.

Hoof Blocks (lameness 21-28 days)



Hardwood Blocks

European beech hardwood blocks for Bovi-Bond. Secure grid pattern grip, wear off in 4-6 weeks. Length: 112mm



Softwood Blocks

NZ Pine softwood blocks for Bovi-Bond. Grip cuts, wear down faster than hardwood. Length: 112mm



Rubber Blocks

Rubber hoof block for lame cows. Provides traction & comfort on wet floors. Reduces pressure on injured hooves. Use Bovi-Bond adhesive for best results. Block size 18mm thick, 124mm length.



Bovi-Bond

Trusted hoof adhesive for lame cows. Easy application with 210ml cartridge and dispensing gun. Sets in 1 min, load-bearing in 2-3 mins. Dispensing gun sold separately.



Hoof care tips from Neil Chesterton, BVSc, www.lamecow.co.nz

- Hoof Testers:** Neil highly recommends using hoof testers (pliers) to identify and isolate where the pain is, then you can treat correctly
- Act Fast:** Treat lame cows within 1-2 days, not 1-2 weeks
- Distance:** Keep distances short - when cows walk too far, or have thinner soles, this can increase lameness and sensitiveness.
- Hierarchy:** Cows are hierarchical animals – this can play into hoofcare! Treat lameness early so you do not need to separate the cow from the herd **FOR MORE THAN A WEEK**. If you need to do this, they lose their position in the herd. If they do lose their position in the herd they are likely to be pushed around, stressed and a little bullied which can lead to damaged hooves

Hoofers (severe lameness 29+ days)

Hoofers blocks are designed to aid in the recovery of lameness issues in cattle by alleviating pressure/pain on the effected claw. These hard-wearing hoof blocks feature a high wall for extra security in severely lame animals and are designed to stay on the claw for 4 weeks.



Starter Kit

Durable PVC cow clogs relieve lameness pressure. Stay-on design for extended treatments. Color-coded, starter pack with glue.



Refill (left) Blue

Refill 5 pack, left/blue supplied with liquid and powder sachet glue.



Refill (right) Orange

Refill 5 pack, right/orange supplied with liquid and powder sachet glue.



Treat the hoof

Tie and secure the affected leg comfortably.
Treat the injured claw.
Prepare healthy claw for Hoofers. Ensure this by trimming and scraping thoroughly. Ensure the hoof is dry before placement.



Check fit

Check Hoofers fits the prepared healthy claw. Trim again if necessary.



Adjust size

For small claws you can shorten heel of Hoofers (use raised line as guide).



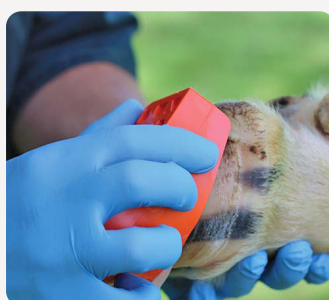
Prepare glue

The two part glue is mixed in the Hoofers. Firstly pour all liquid into shoe, then add 3/4 of powder sachet.



Mixing glue

Mix the liquid and powder well with the spachelor provided. Mixture should resemble a thick paste like liquid. More powder can be added if mixture is too runny.



Apply pressure

Fit the Hoofers on to the healthy claw and apply firm hand pressure for at least 30 seconds. The sole of Hoofers should be parallel with sole of claw.



Remove excess

- Neatly remove excess glue with the spachelor or cloth.
- Take care to keep glue away from space between claws and the coronet.



Release leg

Keep leg tied up until glue is set hard.
After untying leg, keep animal standing for a few minutes before allowing it to return to the herd. Drying times differ with ambient temperature

Veterinary Book for Cattle Farmers

Get comprehensive insights on veterinary procedures for dairy, beef, and dry stock farms from renowned Taranaki veterinarian Cathy Thompson BVSc. This book is complete with instructive text and close-up photographs, providing a realistic look at real-life New Zealand farming.

- Comprehensive guide for all veterinary procedures
- Features close-up photos for clear understanding
- Written by a renowned Taranaki veterinarian
- Essential resource for dairy and beef farmers

First aid and explanations for common conditions. Safety and handling tips, stories of real situations on farms based in New Zealand and over 800 photos.

Written by a vet with more than 30 years experience in cattle practice.

Warning:

This is the real world of veterinary procedures. Definitely not suitable material for children, city folk or the coffee table, but essential for the real dairy or beef farmer to have on hand.

